


SmarTrak (ST-2)




Engineering
GREAT Solutions

**Electronic controller for hydraulic
positioning systems**

SmarTrak Controller

The SmarTrak controller model ST-2 is used as a positioning system for proportionally-driven hydraulic actuators with up to two independent channels. Fast stroke and superior resolution allow the unit to be used with severe service hydraulic actuators which demand fast stroking and precise positioning. The SmarTrak system covers a wide range of actuator sizes and stroke length requirements. SmarTrak is able to manage two fully independent actuators (moving two different valves).



*Fast stroke and
precise positioning*

Key features

- > Compact design
- > Integrated position transmitter
- > Auto-tuning system for calibration
- > Auto-diagnosis system
- > Dedicated software interface to set, customize, control and monitor high dynamic performance
- > Metallic case
- > High reliability
- > Powerful digital signal processor loop time of 1m/sec
- > High performances without expensive closed-loop proportional valves
- > PWM proportional solenoid valve driver with current feedback able to manage different types of valves (tested with Atos, Wandfluh, Bosch Rexroth)
- > The IP66 protection and unique exhaust protection system makes it suitable to be installed in harsh environments where there is tropical rain, dust, sand, salt etc.

Benefits

- > No need for an amplification device in most applications
- > Superior control capacity of amplification device when installed
- > High flow with quick, precise and complete control capability
- > Powerful self calibration software with the ability to totally personalise the parameters
- > Wide set of configurable embedded features
- > Robust design with a full metal housing

Technical specification

Housing material

Painted carbon steel
Full stainless steel 316

Proportional solenoid valve driver (2x)

6-24V - proportional valve, up to 2,6A

ON/OFF solenoid valve driver (6x)

(8x option available)
24V - solenoids up to 1,5A

Position sensor (2x)

Input for magnetostrictive or
4-20mA passive loop

Power supply

Electronic module
24V - minimum 1A (up to 20A based on the number of solenoid connected)

Assembly

For ac/dc input (85-264Vac: 90-350Vd): up to 480W
For 24Vdc input: up to 240VA

Digital output (ALARM)

Configurable, dry contact

Control loop time

1ms

Certifications

CE
ATEX 2014/34/UE

Position feedback output (2x)

4-20mA passive loop isolated

Digital input (TRIP)

Up to 6 (8x option available) dry contact or 24Vac/dc. Logic function configurable

Enclosure protection

IP 66

Weight

14 kg

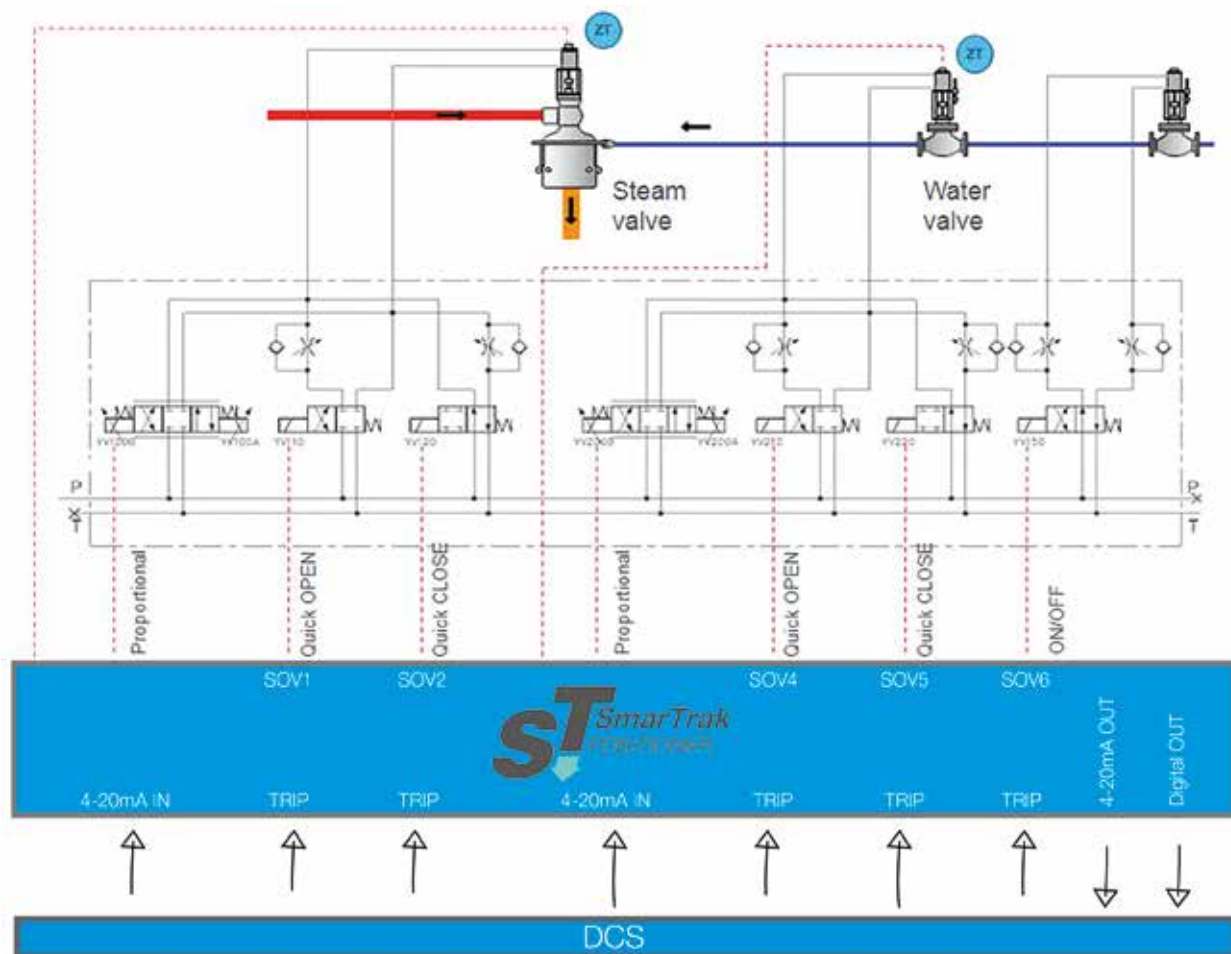
Typical applications

> For each channel

- 4-20mA input (position demand)
- FBK Probe (magnetostrictive or 4-20mA)
- One proportional valve + 3 on/off SOV
- 3 pressure sensor input

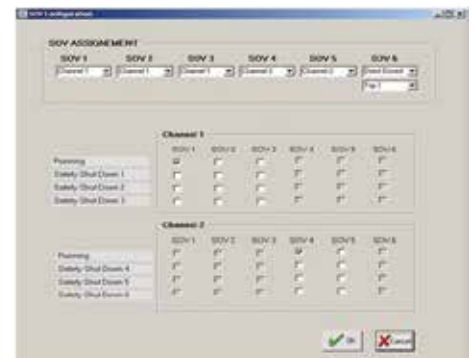
> Common

- 6 digital inputs (trip, quick open, quick close, direct drive ...)
- 3 digital output relay (diagnostic)
- 2 analog output
- Each SOV can be assigned to a TRIP for DirectDrive function (i.e. Water ON/OFF valve)



Remote control software interface

- > HART protocol
- > USB port
- > Up to 500 events are stored in eeprom on the PCB board:
 - Parameters change and events like 'Trip', 'Low pressure', 'Probe fail' are stored
 - All events are saved with date & time reference (and snapshot is saved on SD card)
- > Remote control software available for window system



IMI STI - Headquarters

Via Dei Caravaggi 15
24040 Levate (BG)
Italy

Tel. +39 035 2928.2
Fax +39 035 2928.247

IMI STI - Quarter Turn Division

Via San Francesco 18
29017 Fiorenzuola d'Arda (PC)
Italy

Tel. +39 035 2928.2
Fax +39 0523 1715.295

IMI Critical Engineering

Lakeside, Solihull Parkway
Birmingham Business Park
Birmingham B37 7XZ
United Kingdom

Tel: +44 (0)121 717 3700
Fax: +44 (0)121 717 3701

www.imi-critical.com
imisti.sales@imi-critical.com

